



Recommendation to Revise Pinal County Projections

CAAG POPTAC
February 16, 2011

Why?

- ◆ 2015 projection is likely unachievable
- ◆ RTP
- ◆ ADOT - Executive Order



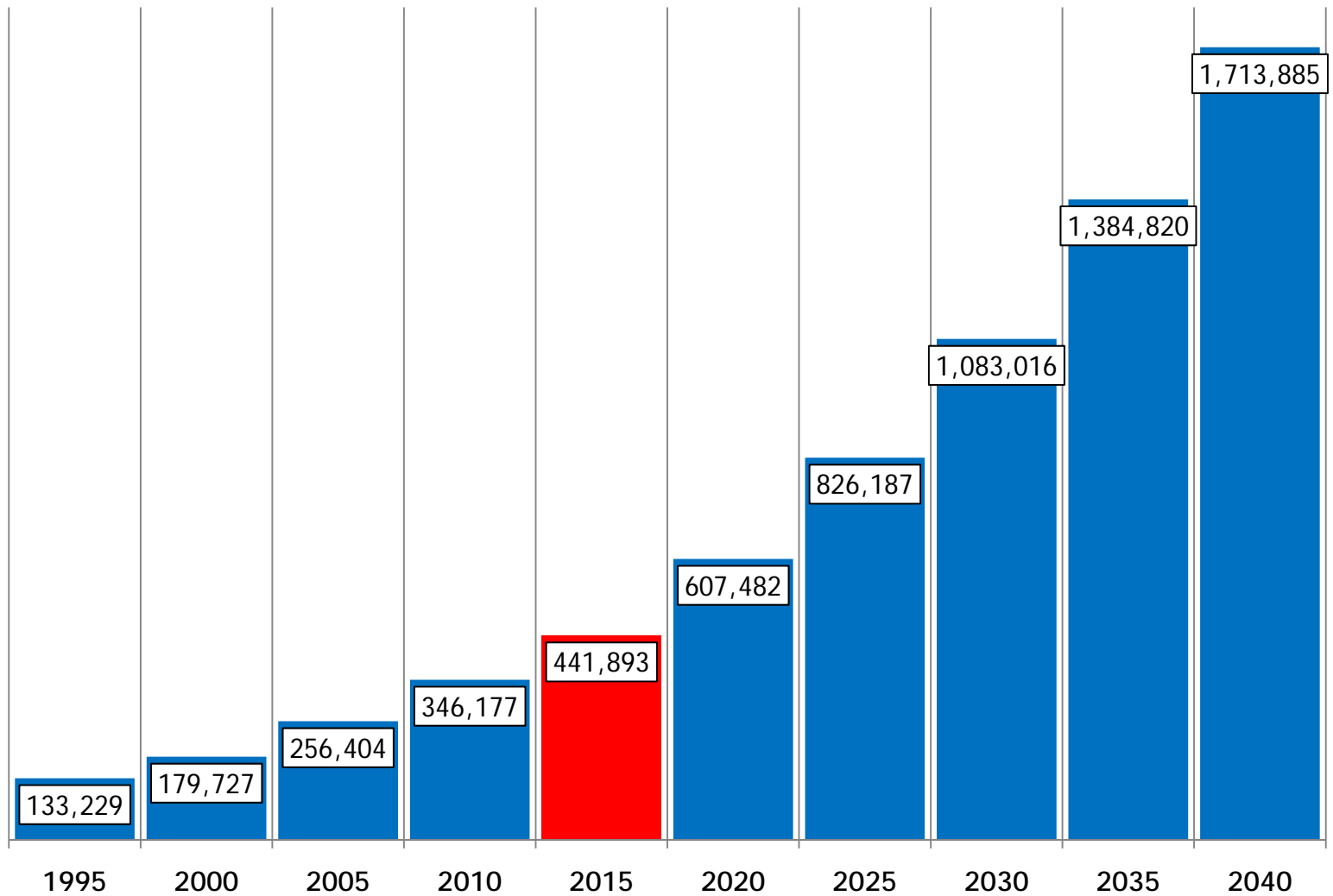
What?

- ◆ Census 2010 - before April 1
- ◆ Revise after Census
- ◆ Focus - 2015
- ◆ Lag all adopted projections by one time period
- ◆ CAAG approvals
- ◆ Get adopted as official State projection



Total Population Pinal County 1995-2040

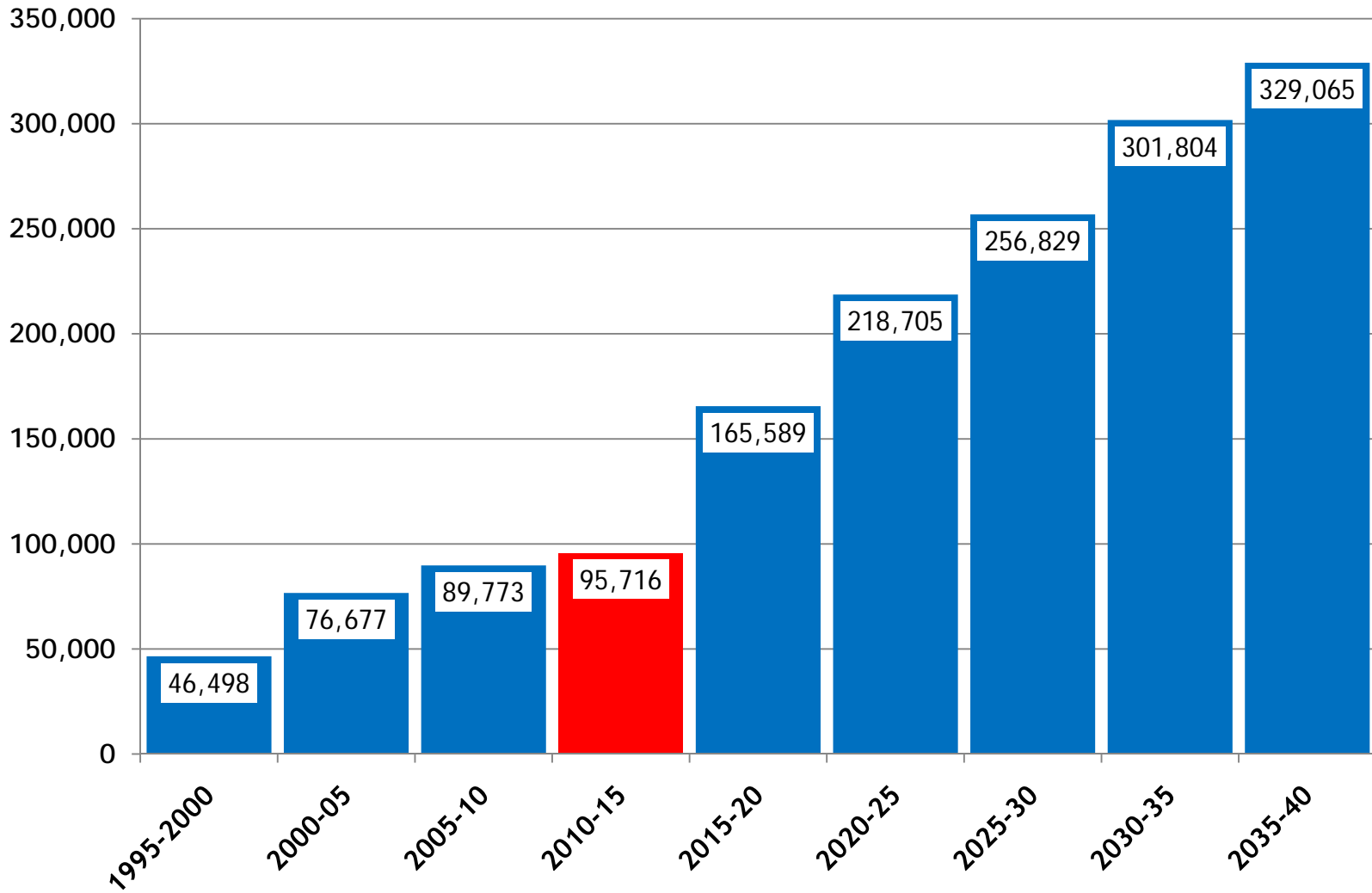
Adopted CAAG Projections



Change in Population by Period

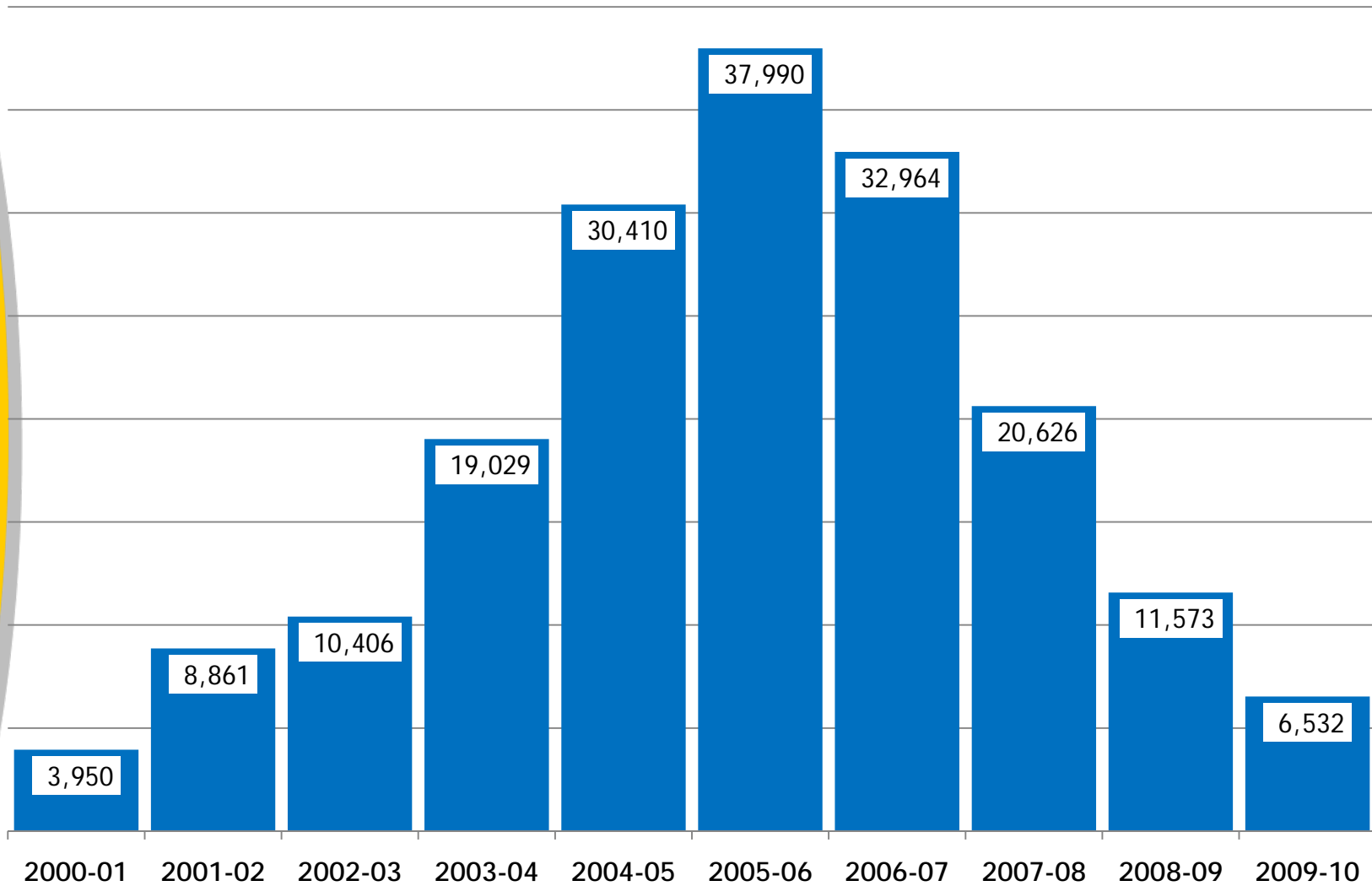
Pinal County, 1995-2040

Adopted CAAG Projections



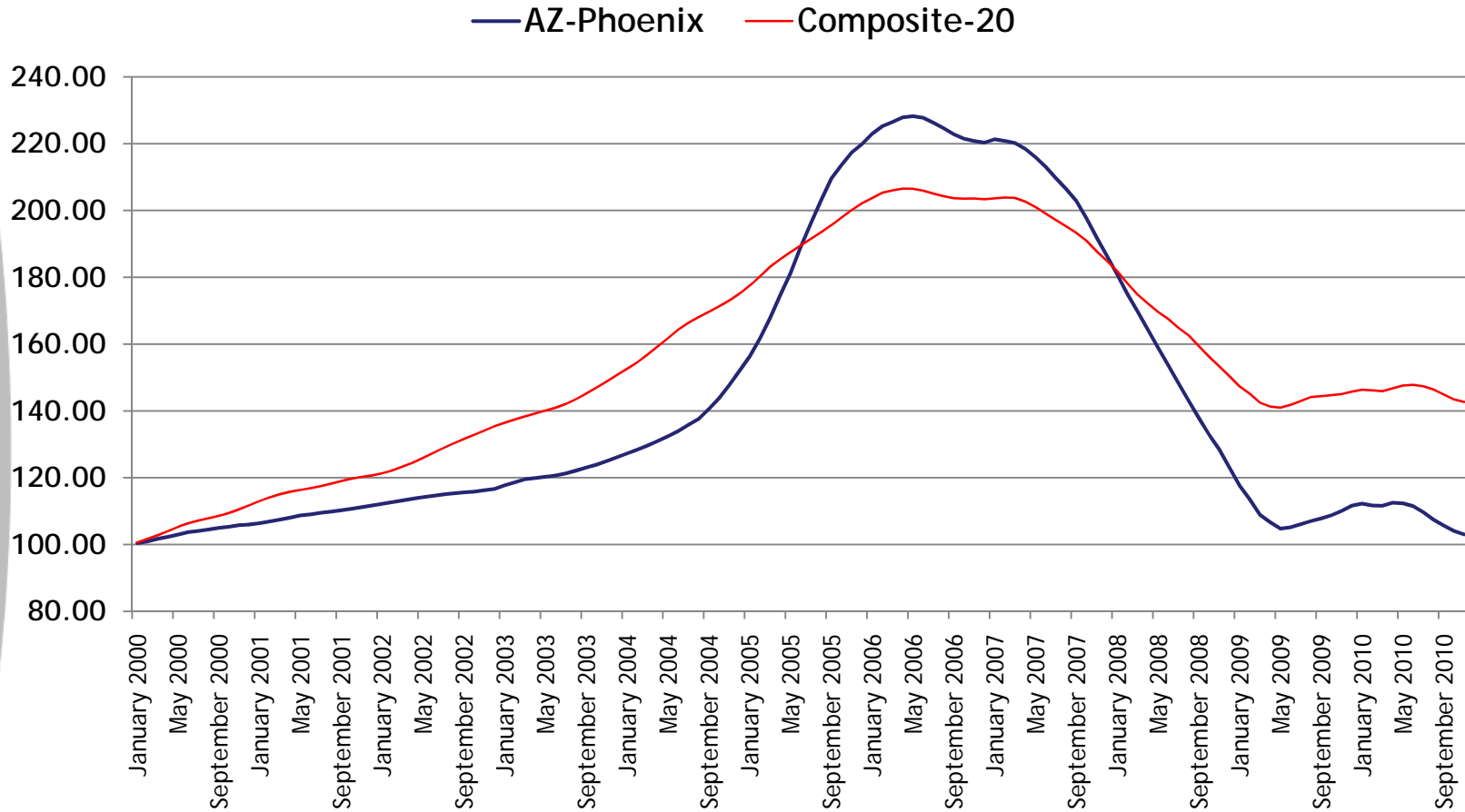
Annual Population Change Pinal County, 2000 to 2010

Source: CAAG

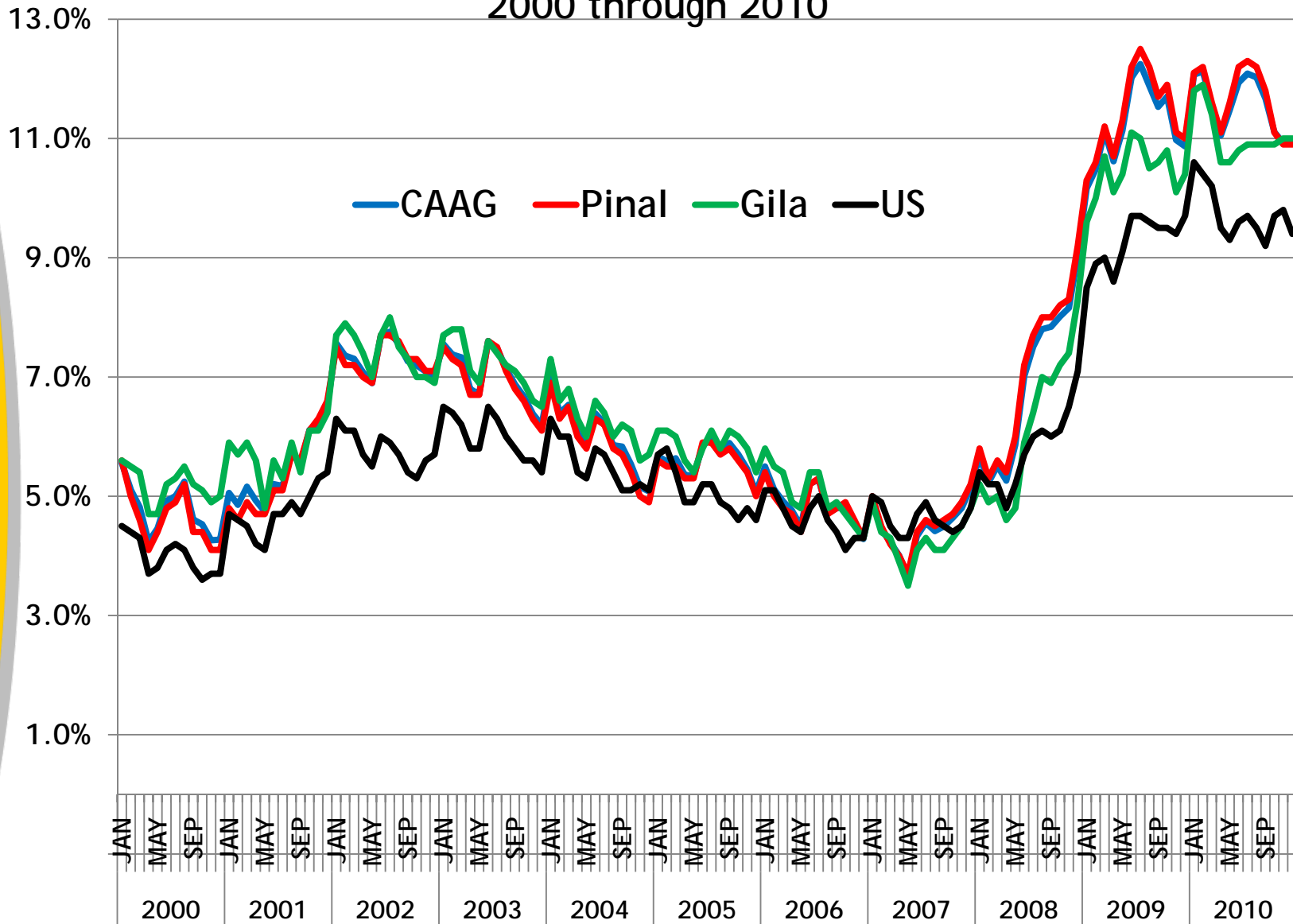


Case-Shiller Home Price Index Metro Phoenix & 20-Metro Composite January 2000 to November 2010

Source: S&P

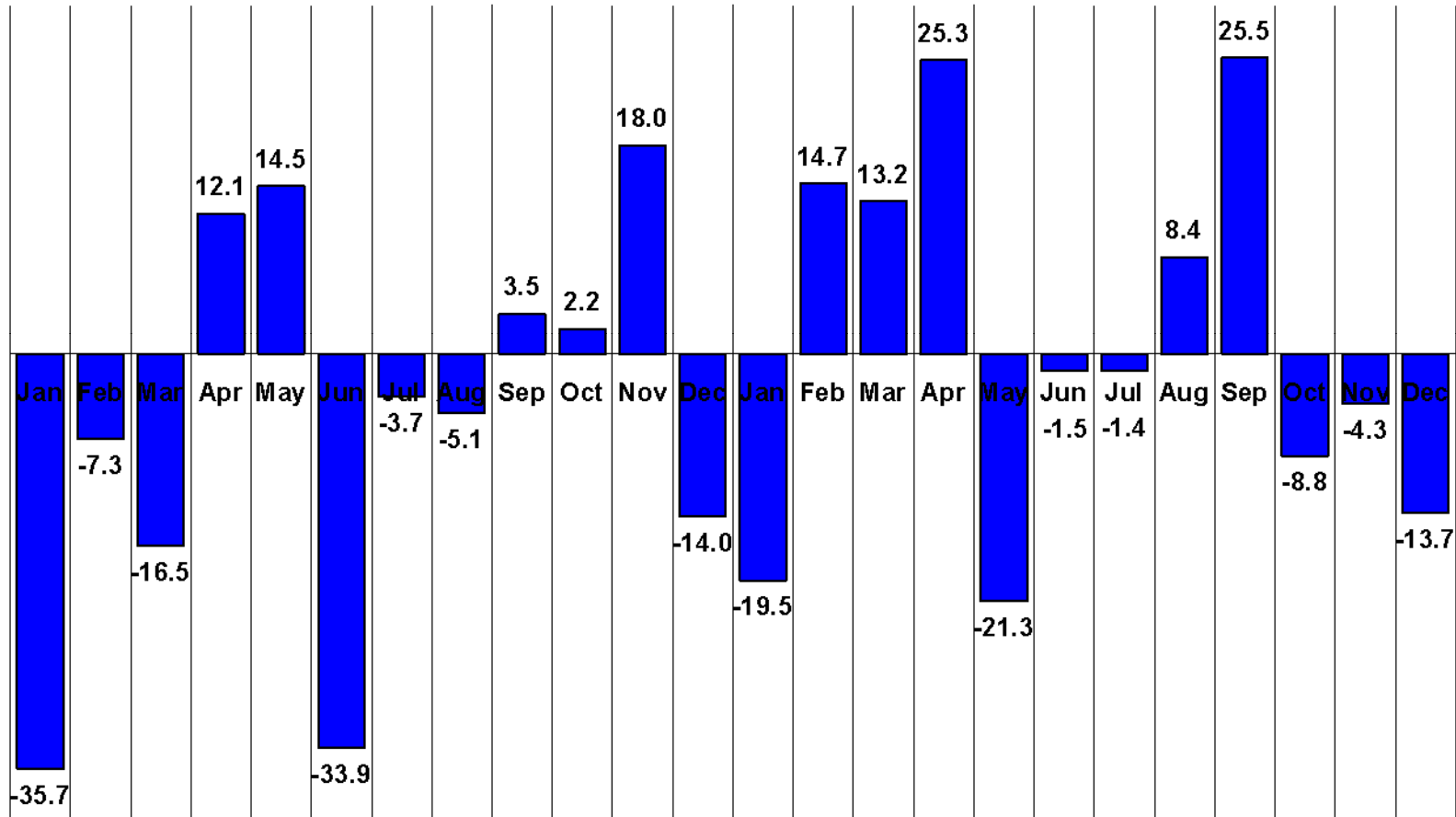


Unemployment Rates by Month 2000 through 2010



Monthly Change in Jobs, Arizona 2009-10 (000's)

Source: AZ Dept. of Commerce



Change in Jobs Arizona, 2000-2015

Source: AZ Dept. of Commerce

