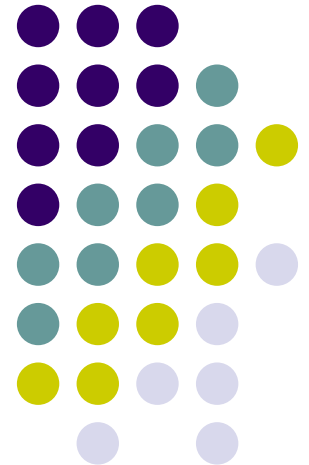


CAAG POPTAC Meeting

January 24, 2008

Planning Department
Central Arizona Association of Governments





Meeting Agenda

- 2010 Census LUCA update
- Planning Department Update - work program schedule
- New information for Pinal County
 - From new databases
 - Planning guidelines for jobs-housing balance in Pinal County
- Pinal County Projections Study - progress report
- Database release - special workshop in March
- CAAG "buddy system" approach/role of POPTAC representatives
- Other Planning Dept. activities
- Member agency roundtable - significant planning activities for each
- Release of Pinal County draft existing population by TAZ - for member agency review and feedback



2010 Census LUCA Program

- US census deadline was December 31, 2007 for applications
- LUCA materials received by many municipalities
- Final submission deadline: **April 4, 2007**
 - (Applications before October 19, 2007, deadline is April 30, 2008)

Nearly finished building new databases!!!



- Everything except minor databases– by March 31, 2008
- Already completed databases:
 - All planned land use – developments, SLD, GP/A (July 2007)
 - Residential completions (July 2007)
 - Existing & future roads (July 2007)
 - MPA-TAZ (July 2007)
- Work plan
 - County control projections by fourth quarter 2008
 - Incorporate major planned land use changes as of fourth quarter 2008
 - All databases updated beginning July 2008
 - Begin TAZ projections – first quarter, 2009
 - Completion of TAZ projections depends on number of iterative changes through member agencies review



Database updates

- Geographies – for modeling and displaying information
 - MPA changes & corresponding TAZ changes
 - Regional analysis zones – sub-areas within MPA's
 - Unincorporated communities
- Future land use - keeping up with new plans
 - County Open Space Plan
 - Florence & Coolidge general plans
 - Superstition Vistas placeholder
- Transportation – timing of regional transportation improvements

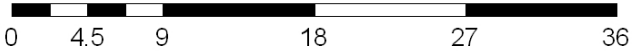
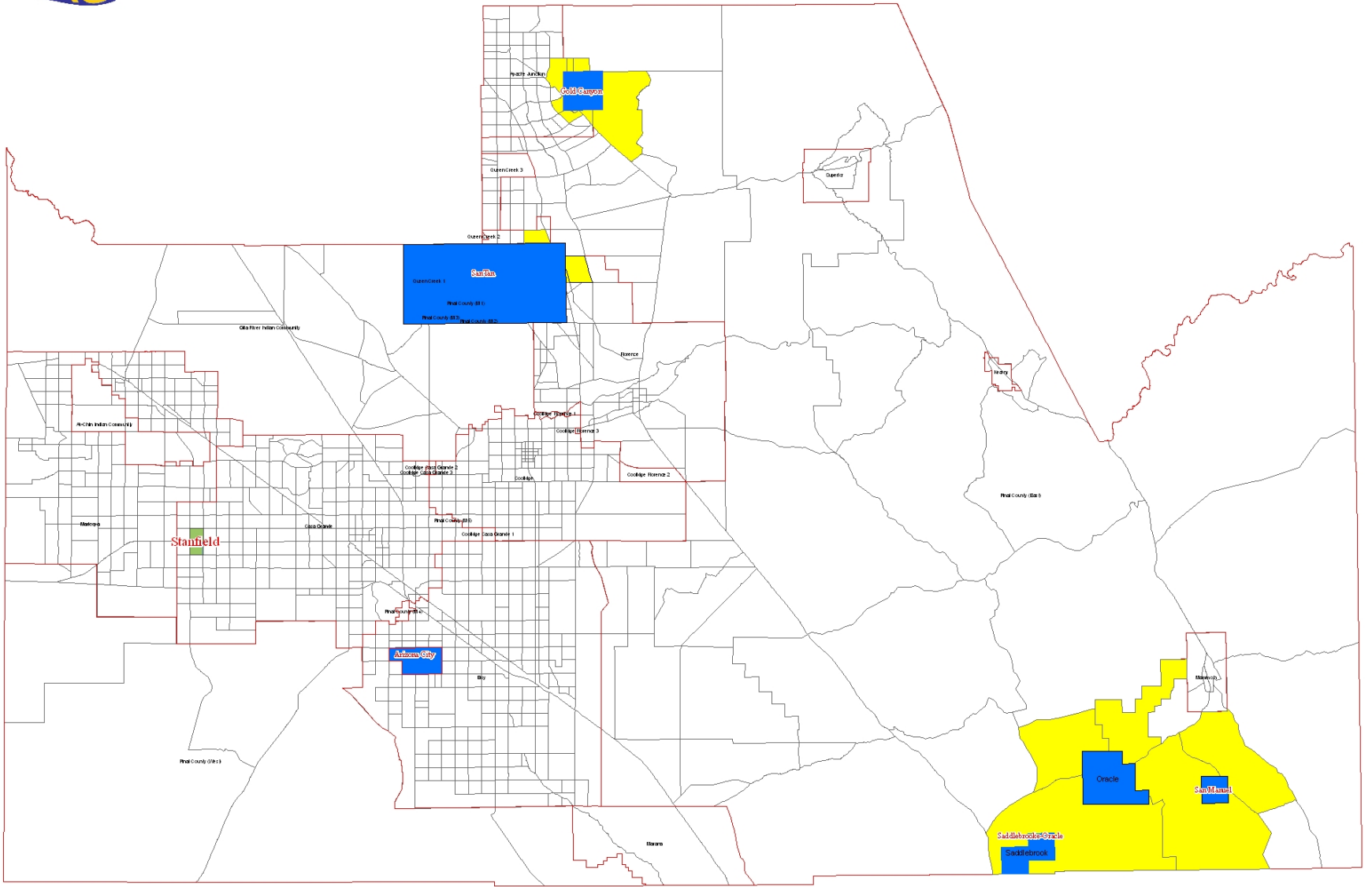


New databases - completed

- Existing population & housing by TAZ
 - Based on 2000 Census & residential completions
 - Time series: July 1 2000 through July 1 2007
 - Housing & population by MPA, RAZ, unincorporated communities
 - Ask for adoption as official CAAG estimates
- Employer databases
 - Releasable vs. non-releasable files
 - Releasable – D&B file
 - Non-releasable – DES UI file
 - Time series – May 2004 through May 2006
 - Total jobs, jobs by industry
- Existing land use – as of December 2006
 - Based on County Assessor's file, December 2006 aerials



Pinal County Unincorporated Communities with TAZ Boundaries



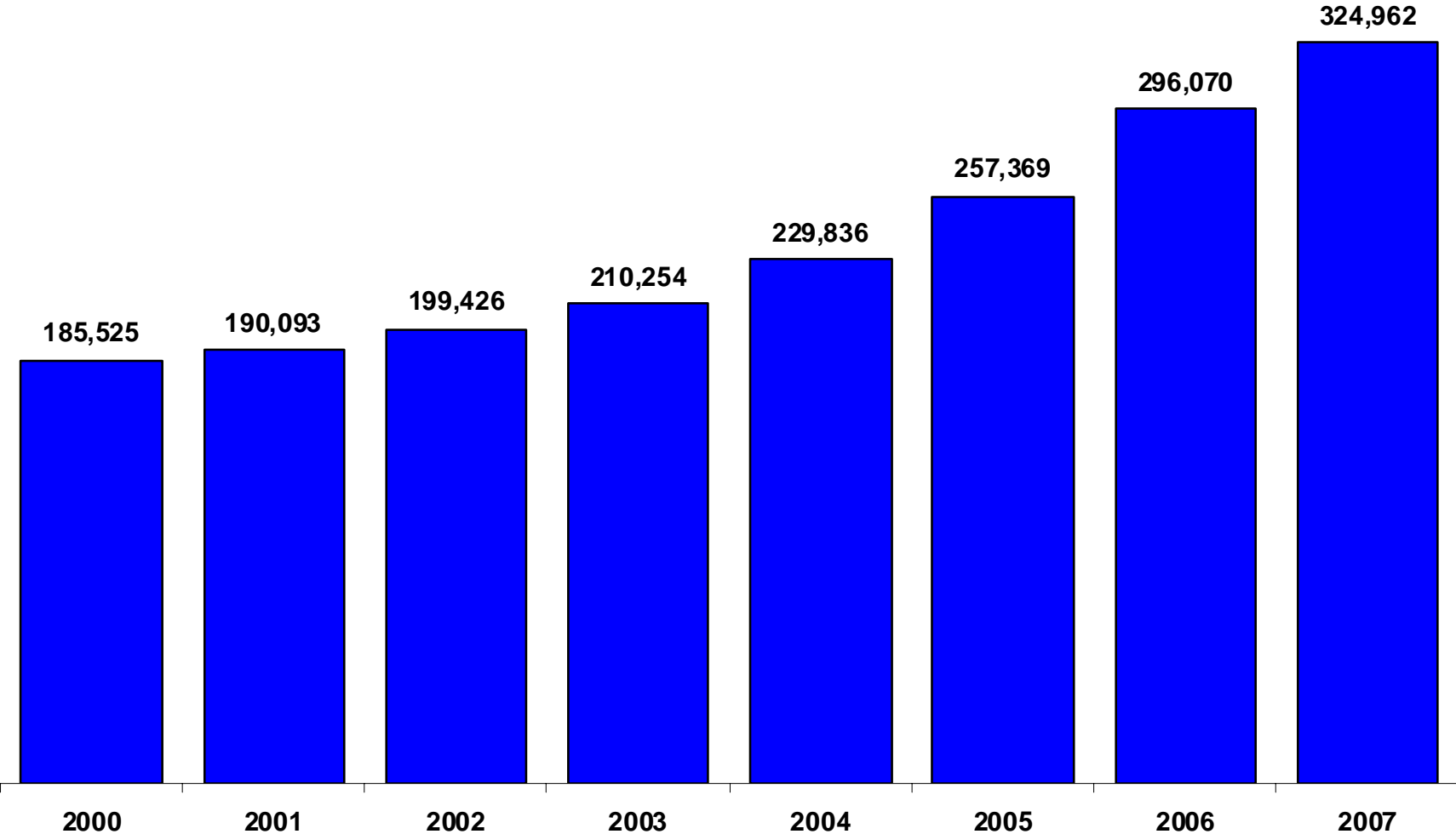
Miles

Total population – to be adopted as official CAAG estimates



Total Population Pinal County July 1, 2000 through July 1, 2007

Source: Central Arizona Association of Governments





A note on DES

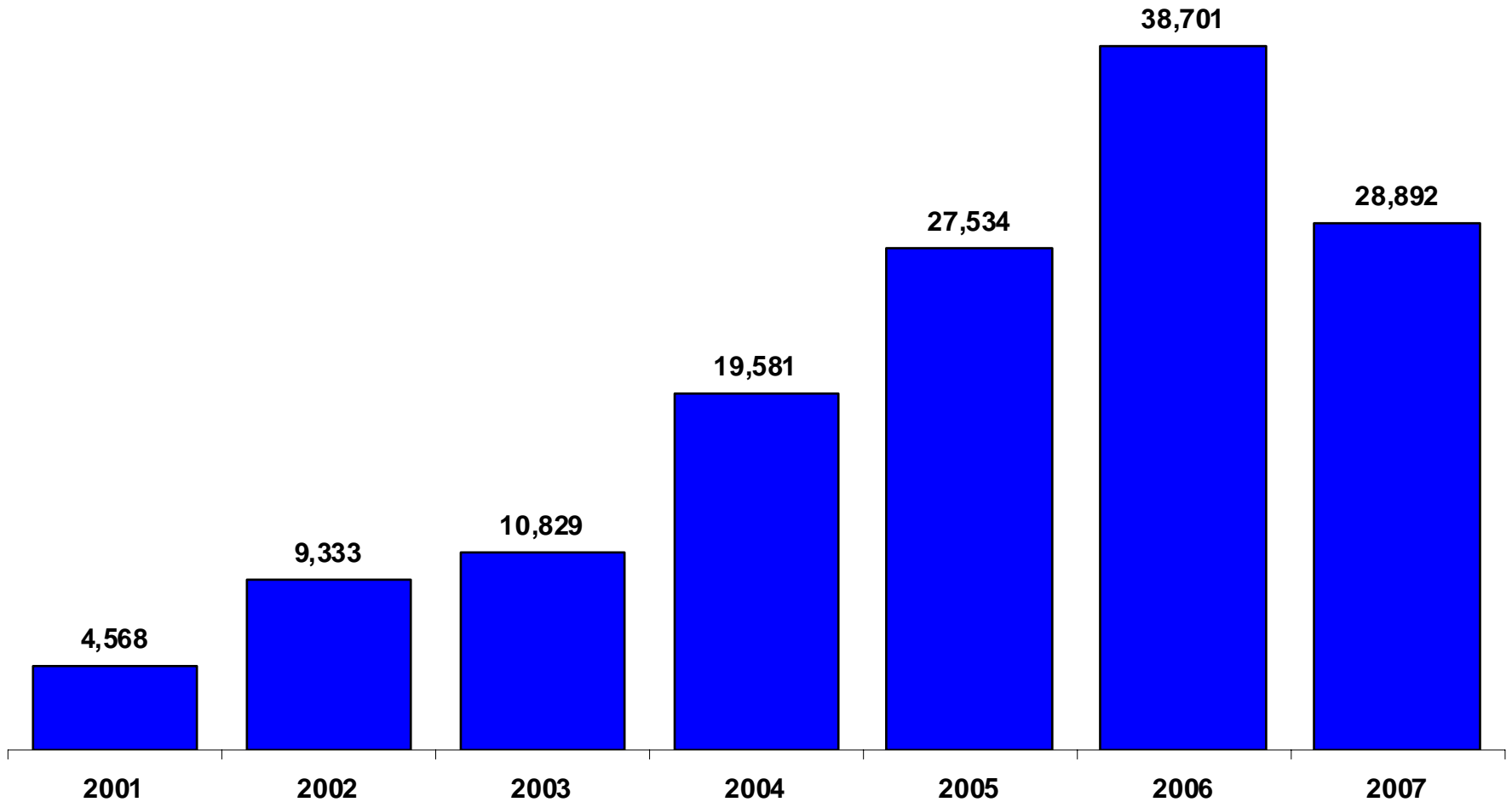
- DES Research Administration now part of Dept. of Commerce
- Greater authority being taken by members of State POPTAC
- Presently, two sub-committees evaluating alternative methodologies for both estimates & projections
- May see modified methodology for 2008 estimates – possible replacement of composite methodology

Population change



Population Change Pinal County, 2001 through 2007

Source: Central Arizona Association of Governments





Total population by MPA, 2000-07

MPA	2000	2001	2002	2003	2004	2005	2006	2007	2000-07 Change	2000-07 % Change
Total County	185,525	190,093	199,426	210,254	229,836	257,369	296,070	324,962	139,437	75.2%
Apache Junction	44,675	45,699	47,513	48,891	50,604	51,948	53,367	54,608	9,933	22.2%
Ak-Chin Indian Community	544	544	544	544	544	544	544	544	0	0.0%
Casa Grande	37,108	38,300	40,246	42,920	45,457	48,037	50,925	54,720	17,611	47.5%
Coolidge	11,161	11,345	11,532	11,706	11,934	12,543	14,167	15,720	4,559	40.8%
Eloy	21,323	21,744	22,911	23,974	25,284	27,147	31,021	34,349	13,026	61.1%
Florence	19,933	20,773	22,393	24,313	28,568	33,985	40,712	46,288	26,355	132.2%
Gila River Indian Community	7,187	7,187	7,187	7,187	7,187	7,187	7,187	7,187	0	0.0%
Kearny	2,662	2,664	2,664	2,664	2,672	2,672	2,691	2,702	40	1.5%
Maricopa	6,540	6,951	7,635	9,114	12,012	17,879	30,816	38,514	31,974	488.9%
Mammoth	2,743	2,767	2,780	2,804	2,818	2,833	2,842	2,855	112	4.1%
Marana	188	197	207	214	223	233	247	257	69	36.7%
Pinal County	25,993	26,353	28,116	29,926	35,726	43,870	51,052	55,067	29,075	111.9%
Queen Creek	2,004	2,100	2,220	2,511	3,296	4,960	6,917	8,569	6,565	327.6%
Superior	3,465	3,469	3,476	3,488	3,511	3,532	3,582	3,582	118	3.4%

Source: Planning Department, Central Arizona Association of Governments

MPA's ranked by total population, 2007



MPA	2000	2001	2002	2003	2004	2005	2006	2007	2000-07 Change	2000-07 % Change
Total County	185,525	190,093	199,426	210,254	229,836	257,369	296,070	324,962	139,437	75.2%
Pinal County	25,993	26,353	28,116	29,926	35,726	43,870	51,052	55,067	29,075	111.9%
Casa Grande	37,108	38,300	40,246	42,920	45,457	48,037	50,925	54,720	17,611	47.5%
Apache Junction	44,675	45,699	47,513	48,891	50,604	51,948	53,367	54,608	9,933	22.2%
Florence	19,933	20,773	22,393	24,313	28,568	33,985	40,712	46,288	26,355	132.2%
Maricopa	6,540	6,951	7,635	9,114	12,012	17,879	30,816	38,514	31,974	488.9%
Eloy	21,323	21,744	22,911	23,974	25,284	27,147	31,021	34,349	13,026	61.1%
Coolidge	11,161	11,345	11,532	11,706	11,934	12,543	14,167	15,720	4,559	40.8%
Queen Creek	2,004	2,100	2,220	2,511	3,296	4,960	6,917	8,569	6,565	327.6%
Gila River Indian Community	7,187	7,187	7,187	7,187	7,187	7,187	7,187	7,187	0	0.0%
Superior	3,465	3,469	3,476	3,488	3,511	3,532	3,582	3,582	118	3.4%
Mammoth	2,743	2,767	2,780	2,804	2,818	2,833	2,842	2,855	112	4.1%
Kearny	2,662	2,664	2,664	2,664	2,672	2,672	2,691	2,702	40	1.5%
Ak-Chin Indian Community	544	544	544	544	544	544	544	544	0	0.0%
Marana	188	197	207	214	223	233	247	257	69	36.7%

Source: Planning Department, Central Arizona Association of Governments



MPA's ranked by group quarters population, 2007

MPA	2000	2001	2002	2003	2004	2005	2006	2007
Total County	15,228	15,825	16,422	17,020	17,617	18,215	20,314	20,919
Florence	11,830	12,409	12,988	13,567	14,146	14,725	15,304	15,883
Eloy	1,684	1,684	1,684	1,684	1,684	1,684	3,186	3,194
Casa Grande	539	539	539	539	539	539	539	539
Gila River Indian Community	429	429	429	429	429	429	429	429
Apache Junction	255	274	292	310	329	347	366	384
Coolidge	214	214	214	214	214	214	214	214
Pinal County	192	192	192	192	192	192	192	192
Maricopa	85	85	85	85	85	85	85	85
Ak-Chin Indian Community	0	0	0	0	0	0	0	0
Kearny	0	0	0	0	0	0	0	0
Mammoth	0	0	0	0	0	0	0	0
Marana	0	0	0	0	0	0	0	0
Queen Creek	0	0	0	0	0	0	0	0
Superior	0	0	0	0	0	0	0	0

Source: Planning Department, Central Arizona Association of Governments



2007 population compared to build-out

MPA	2007	Buildout	Existing % buildout
Total County	324,962	5,839,234	5.6%
Apache Junction	54,608	164,523	33.2%
Casa Grande	54,720	858,077	6.4%
Coolidge	15,720	591,350	2.7%
Eloy	34,349	1,153,187	3.0%
Florence	46,288	645,044	7.2%
Kearny	2,702	10,877	24.8%
Mammoth	2,855	26,224	10.9%
Maricopa	38,514	623,445	6.2%
Pinal County	55,067	1,718,417	3.2%
Queen Creek	8,569	24,143	35.5%
Superior	3,582	22,662	15.8%

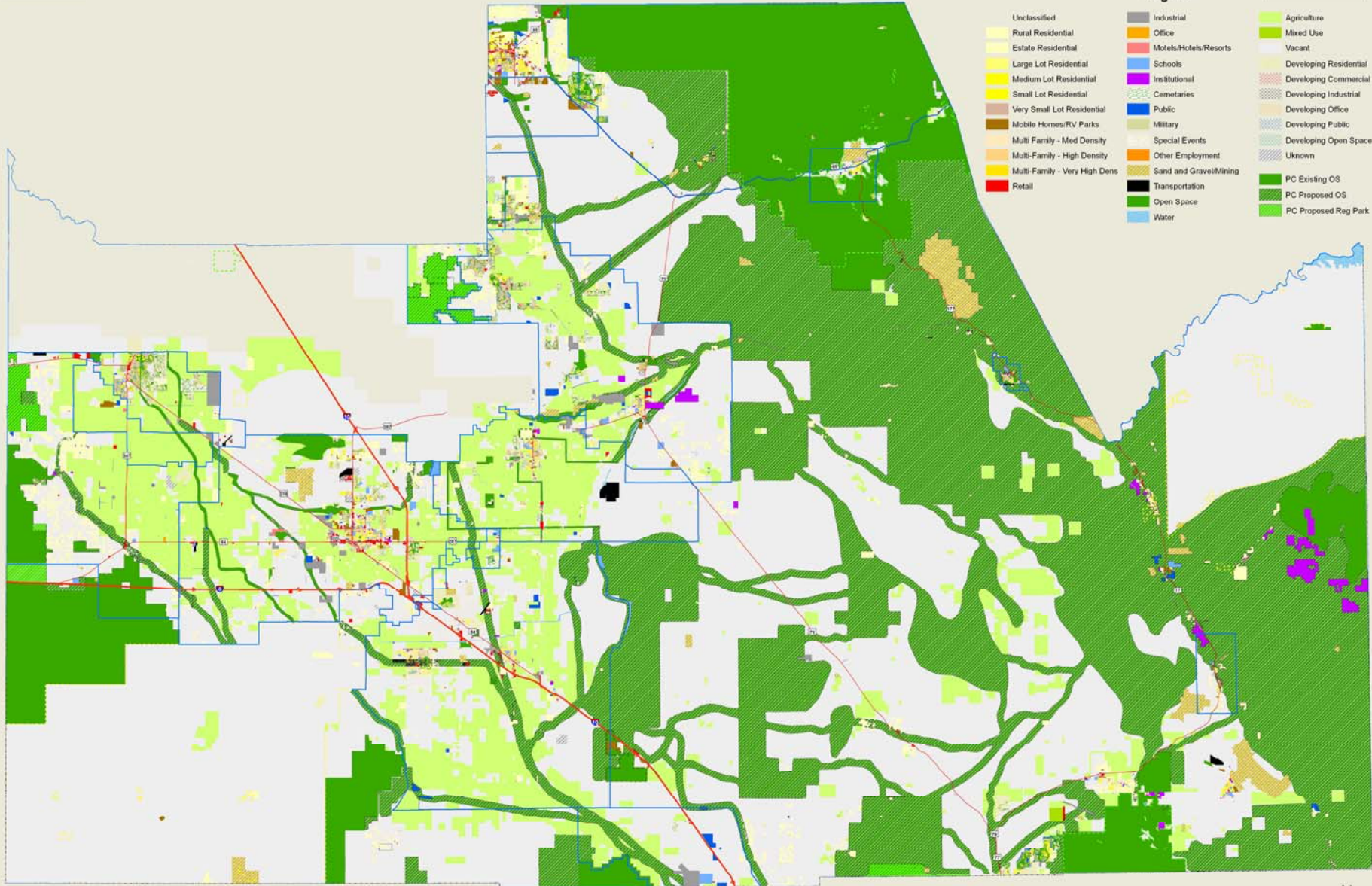


Employer database results, 2004-06

Code	Total	Jobs			% of Total		Change, 2004-06	% Change, 2004-06	Share of Change
		2004	2005	2006	2006	Cumul.			
	Total	40,738	47,625	51,140	100%		10,402	26%	100%
92	Government and government enterprises	11,963	14,209	15,458	30%	30%	3,495	29%	34%
44-45	Retail trade	6,106	6,522	6,931	14%	44%	825	14%	8%
72	Accommodation and food services	3,389	3,890	4,172	8%	52%	783	23%	8%
62	Health care and social assistance	3,506	3,758	3,934	8%	60%	428	12%	4%
31-33	Manufacturing	3,086	3,583	3,807	7%	67%	721	23%	7%
23	Construction	1,571	1,951	2,428	5%	72%	857	55%	8%
11	Agriculture, forestry, fishing	2,269	2,757	2,331	5%	76%	62	3%	1%
56	Administrative and waste services	684	2,187	2,320	5%	81%	1,636	239%	16%
81	Other services, except public administration	1,260	1,481	1,548	3%	84%	288	23%	3%
71	Arts, entertainment, and recreation	1,558	1,373	1,462	3%	87%	(96)	-6%	-1%
48-49	Transportation and warehousing	889	901	1,400	3%	90%	511	57%	5%
21	Mining	928	1,054	1,064	2%	92%	136	15%	1%
42	Wholesale trade	811	891	1,009	2%	94%	198	24%	2%
54	Professional and technical services	722	809	880	2%	95%	158	22%	2%
52	Finance and insurance	580	697	778	2%	97%	198	34%	2%
53	Real estate and rental and leasing	424	519	504	1%	98%	80	19%	1%
22	Utilities	432	438	491	1%	99%	59	14%	1%
61	Educational services	252	298	320	1%	99%	68	27%	1%
51	Information	288	282	285	1%	100%	(3)	-1%	0%
55	Management of companies and enterprises	17	14	18	0%	100%	1	6%	0%
99	Not elsewhere classified	3	11	-	0%	100%	(3)	-100%	0%

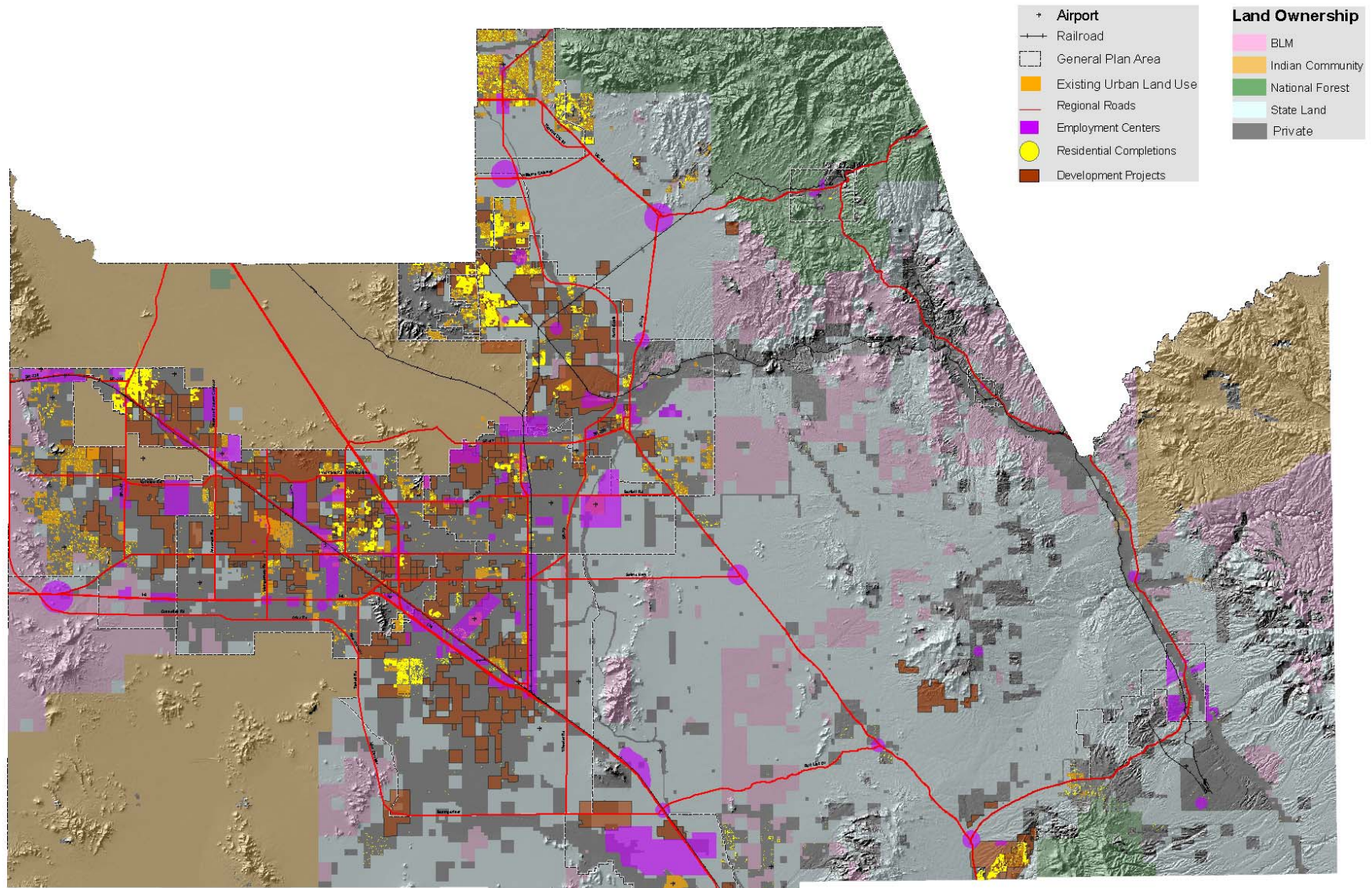


Central Arizona Association of Governments Existing Land Use, 2006 Pinal County



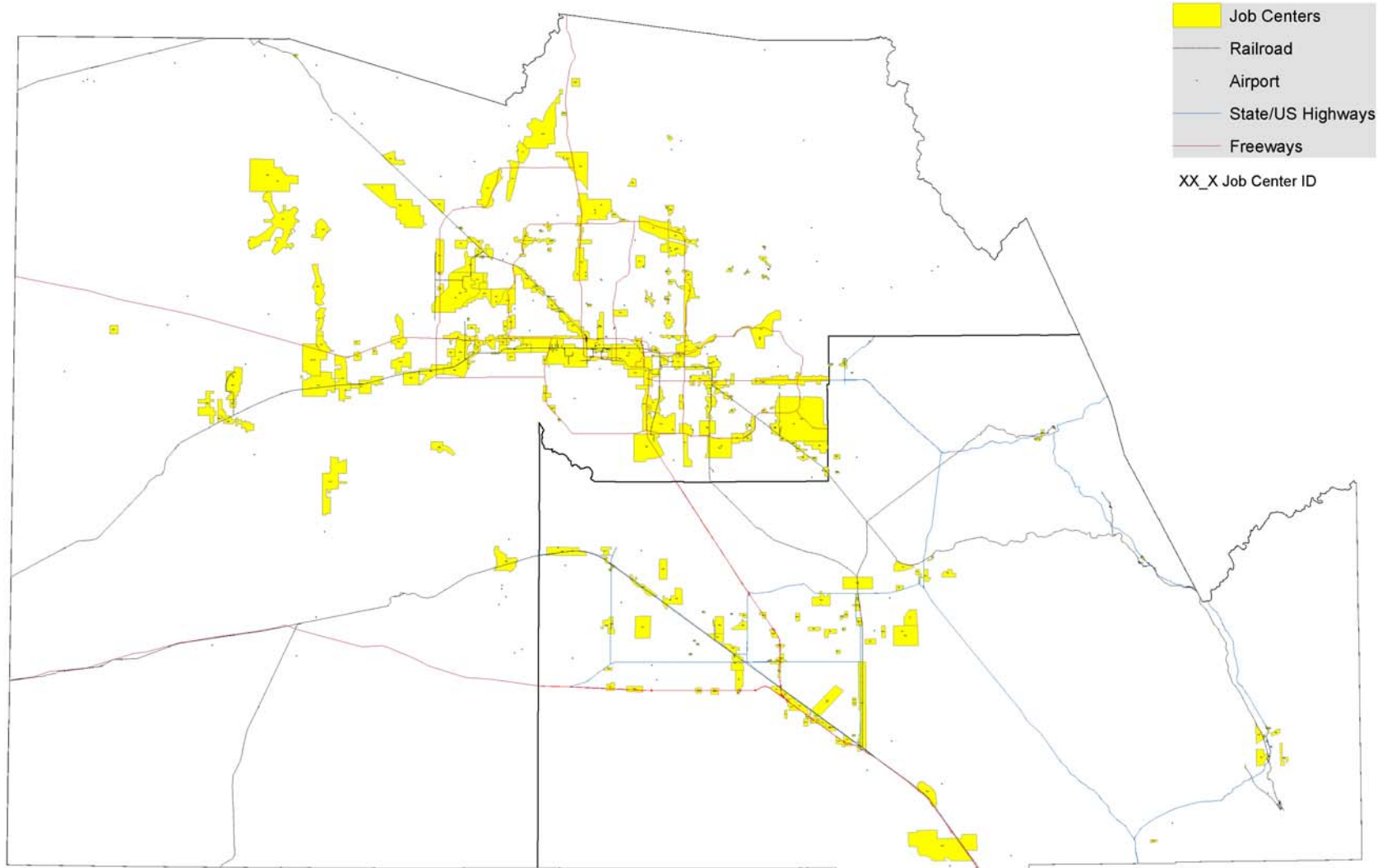


Central Arizona Association of Governments Existing Urban Land Use, Residential Completions, Development Projects and Job Centers Pinal County





Draft Maricopa County and Pinal County Job Centers January 2008



Job Centers Analysis

Maricopa County General Category		Centers		Tot Ac	% Res	Nonres Ac					
		Count	% total			Acres	Max	Min	Mean	St Dev.	Disp.
1	Airport: industrial-business park-other	5	3.0%	23,268	0.0%	23,268	6,280	2,938	4,654	1,285	0.28
2	Business park	10	6.1%	25,190	30.4%	17,520	6,868	51	1,752	2,559	1.46
3	Business park-industrial	10	6.1%	42,040	24.2%	31,868	14,448	147	4,204	4,344	1.03
4	Business park-industrial-other LU mix	7	4.2%	19,439	23.3%	14,911	5,332	894	2,130	1,458	0.68
5	Business park- office, other, public	10	6.1%	23,141	16.5%	19,328	10,514	134	1,933	3,116	1.61
6	Business park-retail	13	7.9%	18,216	27.9%	13,134	2,014	99	1,010	667	0.66
7	Business park-retail-other LU mix	15	9.1%	38,193	51.9%	18,357	4,025	69	1,224	1,260	1.03
8	Industrial	2	1.2%	3,679	2.9%	3,573	2,099	1,474	1,787	442	0.25
9	Industrial-other, office, public	5	3.0%	2,169	26.0%	1,605	660	88	321	251	0.78
10	Industrial-retail	14	8.5%	24,964	26.9%	18,257	10,077	74	1,404	2,704	1.93
11	Industrial-retail-other LU mix	14	8.5%	30,568	37.1%	19,222	2,322	124	1,373	866	0.63
12	Downtown: all uses ex ind	8	4.8%	7,012	47.4%	3,691	791	72	461	297	0.64
13	Office, alone or with other LU mix	6	3.6%	8,565	38.0%	5,307	2,767	117	758	930	1.23
14	Other, alone or with other LU mix	15	9.1%	27,600	34.8%	17,982	7,820	34	1,199	2,163	1.80
15	Public, alone or with other LU mix	9	5.5%	12,520	46.1%	6,750	4,022	13	750	1,244	1.66
16	Retail	9	5.5%	5,802	34.7%	3,786	1,094	97	421	379	0.90
17	Retail plus office, other, and/or public	13	7.9%	6,586	42.9%	3,761	1,016	5	289	276	0.95
Maricopa County Total		165	100.0%	325,122	31.6%	222,320	14,448	5	1,347	2,046	1.52

Pinal County General Category		Centers		Tot Ac	% Res	Nonres Ac					
		Count	% total			Acres	Max	Min	Mean	St Dev.	Disp.
1	Ind	19	18.1%	15,844	0.0%	15,842	3,553	1	834	854	1.02
2	Ind-off	14	13.3%	23,187	0.0%	23,187	10,568	7	1,656	2,733	1.65
3	Ind-off-other LU combos	9	8.6%	15,234	13.9%	13,114	5,615	50	1,457	1,820	1.25
4	Ind-ret	7	6.7%	3,316	39.6%	2,004	877	78	286	302	1.06
5	Ind-ret-other LU combos	11	10.5%	5,995	10.2%	5,383	2,985	32	489	888	1.82
6	Pub	4	3.8%	519	0.0%	519	318	2	130	141	1.08
7	Ret	8	7.6%	956	14.6%	816	232	4	102	102	1.00
8	Ret-off	9	8.6%	4,271	3.2%	4,136	1,817	140	460	520	1.13
9	Ret-off-hos	8	7.6%	4,759	8.2%	4,371	1,427	76	546	445	0.81
10	Ret-off-med	5	4.8%	705	0.0%	705	296	71	141	90	0.64
11	Ret-other LU combos w-o ind	11	10.5%	3,090	8.3%	2,835	1,224	8	258	368	1.43
Pinal County Total		105	100.0%	84,623	13.8%	72,912	10,568	1	694	1,311	1.89

County Comparison General Category		Centers		Tot Ac	% Res	Nonres Ac					
		Count	% total			Acres	Max	Min	Mean	St Dev.	Disp.
Maricopa County		165	100.0%	325,122	31.6%	222,320	14,448	5	1,347	2,046	1.52
Pinal County		105	100.0%	84,623	13.8%	72,912	10,568	1	694	1,311	1.89
Maricopa-Pinal ratios		1.6		3.8		3.0	1.4	9.7	1.9	1.6	0.8

New databases – in process, next to be released

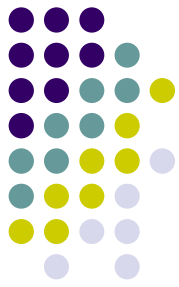


- Build-out update
 - New MPA's & corresponding TAZ changes
 - Updates to Florence & Coolidge general plans
 - County Open Space Plan
 - Superstition Vistas area placeholder, based largely on draft alternative of County comp. plan
- Timing of regional transportation segments
 - Based on 20+ interviews, latest programmed segments
 - Three scenarios – likely, optimistic, pessimistic
- Existing jobs by TAZ
 - Time series, 2004-06
 - By industry – for economic development
 - By land use category – for transportation modeling – not till final land use plans

Database Release - Workshop

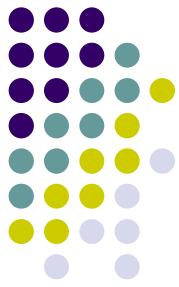


- Planned for March 2008 – Location and Date TBD
- Member Agency Planning and GIS staff will be invited
- Databases planned for release
 - Geographies
 - Residential Completions – both counties
 - Group Quarters Facilities & Population – both counties
 - Existing Population by TAZ
 - Harris Employer Database – both counties
 - Existing Jobs by TAZ
 - Existing Land Use
 - Job/Activity Centers
 - Development Projects/SLD Concept Plans
 - General Plans/Amendments
 - Revised Build Out
- Databases offered in multiple formats
- Information will be presented in hard copy maps and tables
- Discussion regarding method, timing and format of distribution
- Database information will be discussed in detail and examples of uses/analysis will be presented at the workshop



Operational adjustments

- So much activity, impossible to incorporate all changes at once
 - MPA boundary changes necessitate TAZ changes
 - Changing plans – both land use & transportation
- Conclusion: annual updates going forward
 - Incorporate information as of July 1
 - Aim to release all database updates by following Jan-March
- So much activity, CAAG gains much information through personal meetings
- Conclusion: buddy system



Buddy system

- Purpose: share information
 - New activity & plans by members
 - Upcoming changes for CAAG to watch for
 - New information from CAAG
 - How members want information delivered

James Clancy	Angela Gotto	Robert Wilson
Casa Grande	Kearny	Apache Junction
Florence	Mammoth	Coolidge
Maricopa	Superior	Eloy
Queen Creek		Pinal County

A reminder about CAAG POPTAC



- Official CAAG committee
- Member agency POPTAC representatives
 - Primary member – normally attend POPTAC
 - Secondary member – attend when primary cannot
- Responsibilities of POPTAC representatives
 - Provide information from jurisdiction
 - Provide entre to your jurisdiction
 - Review & quality control of CAAG databases
 - Approval of CAAG estimates & projections

County Projections Study



- Surveys
 - Transportation, water, real estate/development, economic development
 - In person interviews started in December
 - Web-based surveys – up in January
- Sub-county market regions
- Comparable counties analyses
 - Ten similar counties – CA, TX, CO, FL, GA
 - History of population & jobs from 1970 to 2005
 - Relationship between population growth and jobs growth
- 3-County Area (aka Sun Corridor)
 - Demographic conditions – migration, fertility, mortality trends; evaluation of existing projections
 - Economic structure case study – Riverside County
 - Historic data for 3-County projections model

Riverside County 4-decade growth trends



	Population	Jobs	Jobs to Pop Ratio	Population Change	Jobs Change	Jobs-Pop Ratio, Change
1965	401,700	70,430	0.18			
1970	456,916	86,169	0.19	55,216	15,739	0.29
1975	528,600	101,020	0.19	71,684	14,851	0.21
1980	663,199	155,607	0.23	134,599	54,587	0.41
1985	825,685	189,739	0.23	162,486	34,132	0.21
1990	1,170,413	292,031	0.25	344,728	102,292	0.30
1995	1,383,646	297,865	0.22	213,233	5,834	0.03
2000	1,545,387	392,806	0.25	161,741	94,941	0.59
2005	1,945,392	505,424	0.26	400,005	112,618	0.28

Other Planning Department Activities



- State POPTAC methodology subcommittees – both estimates & projections
- BQAZ
- Pinal Comp. Plan
- ULI – Metro Phoenix Reality Check
- EVP Superstition Vistas Plan
- CAAG Strategy
- FY08-09 CAAG budget



For Further Information

- Jack Tomasik
 - Planning Director
 - tjack1027@qwest.net
- Robert Wilson
 - Planning Manager
 - rwilson@caagcentral.org
- James Clancy
 - Principal Planner
 - jclancy@caagcentral.org
- Angela Gotto
 - Planning Technician
 - agotto@caagcentral.org

Central Arizona of Governments
Planning Department
2066 W. Apache Trail, Suite 110
Apache Junction, AZ 85220
480-671-0059